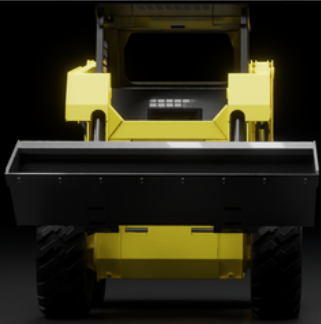




SKID STEER MINI LOADER



GST S-KID

The GST S-Kid our industry leading skid steer mini loader is the ultimate solution for the mining industry, boasting unparalleled performance and longevity. Its robust design and high hydraulic flow make it versatile and capable of handling a wide range of tasks with ease.

Thanks to its easy attachment mounting system, this mini loader ensures maximum efficiency and **low fuel consumption**. Its durable construction guarantees longevity and smooth operation in any environment, making it a cost-effective and indispensable multi-functional tool for mining operations.

»» DETAILS

- ✓ Changing attachment just takes a few seconds
- ✓ Various attachments available
- ✓ Speed: 12km/h
- ✓ Fail-Safe Hydrostatic Brake System for Enhanced Safety

»» BENEFITS

- Mini Loaders offer both speed and reliability for your projects
- Guarantee maximum performance with Mini Loaders
- Increase efficiency on the job with Mini Loaders
- Save on fuel consumption when using Mini Loaders
- Effortlessly control the boom, bucket, and drive with the joystick feature
- Enjoy added convenience with the foot pedal feature
- Reach a speed of 12km/h
- Experience unmatched durability with Mini Loaders
- Simplified design for easy operation and maintenance
- Accessible filters make maintenance quick and easy
- Minimize downtime and costs with easy maintenance and servicing features for the Mini Loader



Learn More:



»» GENERAL SPECIFICATIONS

- Bucket Capacity: 0.45m³
- Rated Loading Capacity (*with counter weights): 1075 kg / * 1450 kg
- Operating Weight (* with counter weights): 3540 kg / * 3840 kg
- Tipping Load: 2400kg
- Breakout Force: 2700kg
- Diesel Engine: Kubota V3800 - DI - TE
- Rated Output: 72,8 kW @ 2600RPM
- Cylinder: 4
- Cooling System: Liquid
- Breaks: Hydrostatic Brake System
- Tires Standard: 12 x 16,5
- Battery: 12V - 105A
- Speed: 0-12km/h
- Operation: Joystick



1450kg
Rated Loading Capacity with Counter Weight



Various
Attachment Options



0.45m³
Bucket Capacity



ROPS AND FOPS
CERTIFIED

»» HYDRAULIC SYSTEM (BOSCH REXROTH)

- Drive Pumps: 45 cc + 45 cc Hydrostatic Pump (320 bar)
- Attachment Pumps: 32 cc 220 bar

»» CAPACITIES

- Fuel Tank: 90 liter
- Hydraulic Oil: 180 liter
- Engine Oil: 11 liter

»» DIMENSIONS

- Width Over Bucket: 1,860m
- Width Over Chassis: 1,360m
- Length With Bucket: 3,780m
- Maximum Dump Height: 2,425m
- Hinge Pin Height at Maximum Lift: 3,122m
- Maximum Height: 3,998m
- Height To Top of Cab: 2,070m
- Ground Clearance: 225mm

»» CLIENTS

